

RIVER



GLAM-MORE

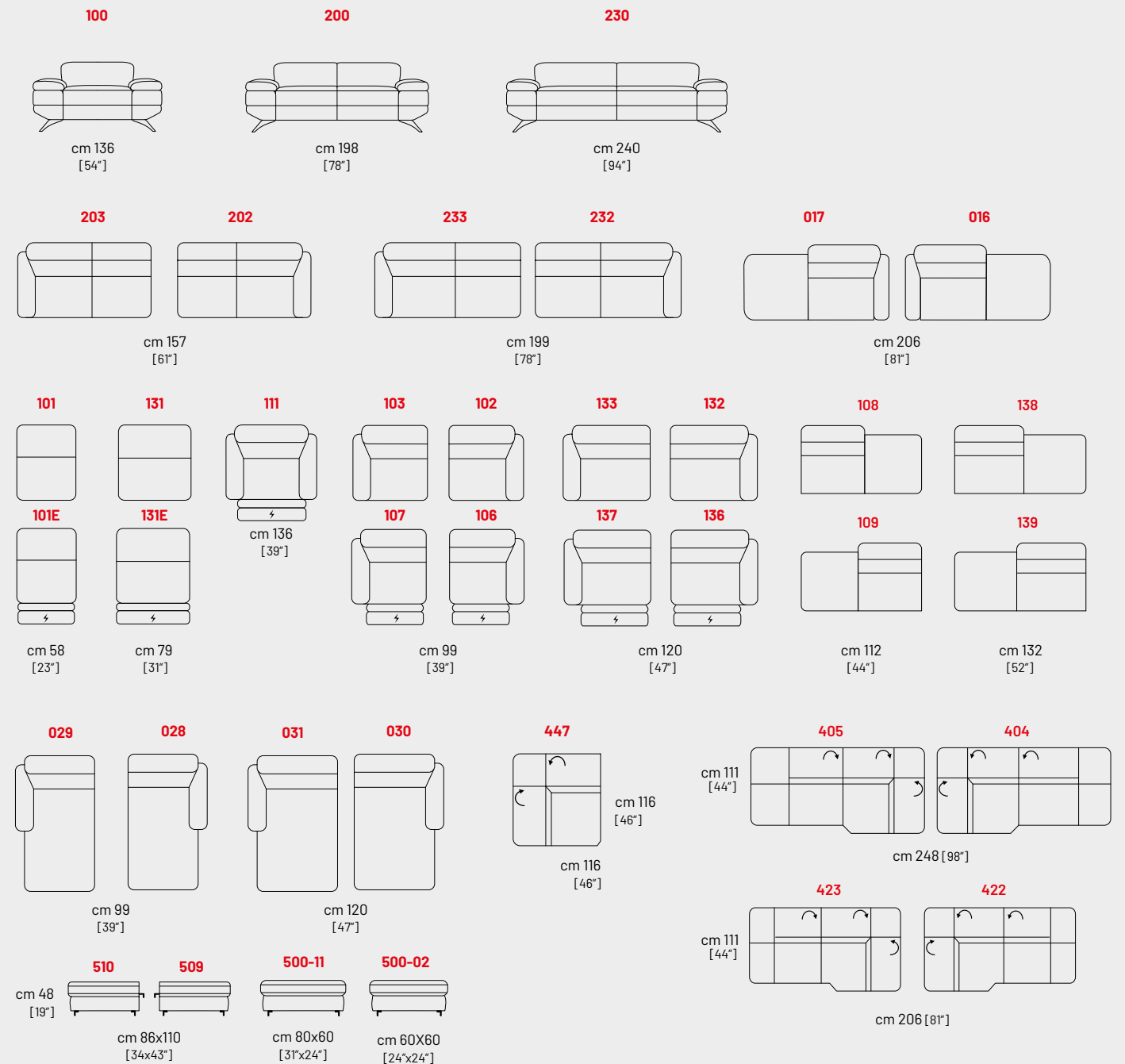
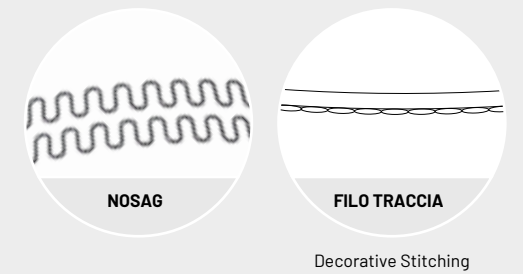
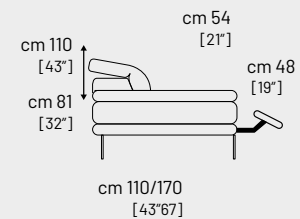
RIVER



Struttura: Abete, Multistrato e pannelli di particelle in legno classe E1. **Molleggio:** Molla greca per Seduta; Cinghia elastica per Spalliera. **Imbottitura Seduta:** Lastre in poliuretano espanso in densità 35 Kg. **Imbottitura Spalliera:** Lastre in poliuretano espanso in densità 21 Kg. **Piedi:** Piedi in metallo in varie finiture. **Particolarità:** Le versioni sono dotate di poggiatesta sollevabile manualmente. Disponibile nelle versioni con meccanismo elettrico. **Note:** Cuscini seduta, Braccioli e Schienali sono fissi.

Frame: Pinewood, multilayer wood and chipboard wood class E1. **Suspension:** Nosag metal springs. **Seat Padding:** Layers of non-deformable polyurethane foam 35 Kg density. **Back Padding:** Layers of non-deformable polyurethane Foam 21 Kg density. **Feet:** metal feet in various finishes. **Peculiar:** All covers are equipped with a manual headrest. Recliner "Zero Wall" System with electrical function. **Note:** Seat, Arms and Back cushions are fixed.

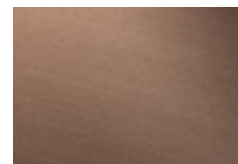
Carcasse: Hêtre + panneaux de particules cl. E1. **Suspension:** Nosag. **Coussins d'assise:** Polyurethane expansé densité 35 Kg. **Coussins de dos:** Polyurethane expansé densité 21 Kg. **Pieds:** En métal différentes finitions. **Divers:** Toutes les versions ont un appuie tête soulevable manuellement. Mécanisme "zero wall system" relax électrique. **Note:** Coussins d'assise, du Dossiers et accoudoirs sont fixes.



Piedi / Feet / Pieds



Colore piedi / Color Feet / Couleur Pieds



Cromato

Bronzato