

MERCEDES



GLAM-MORE

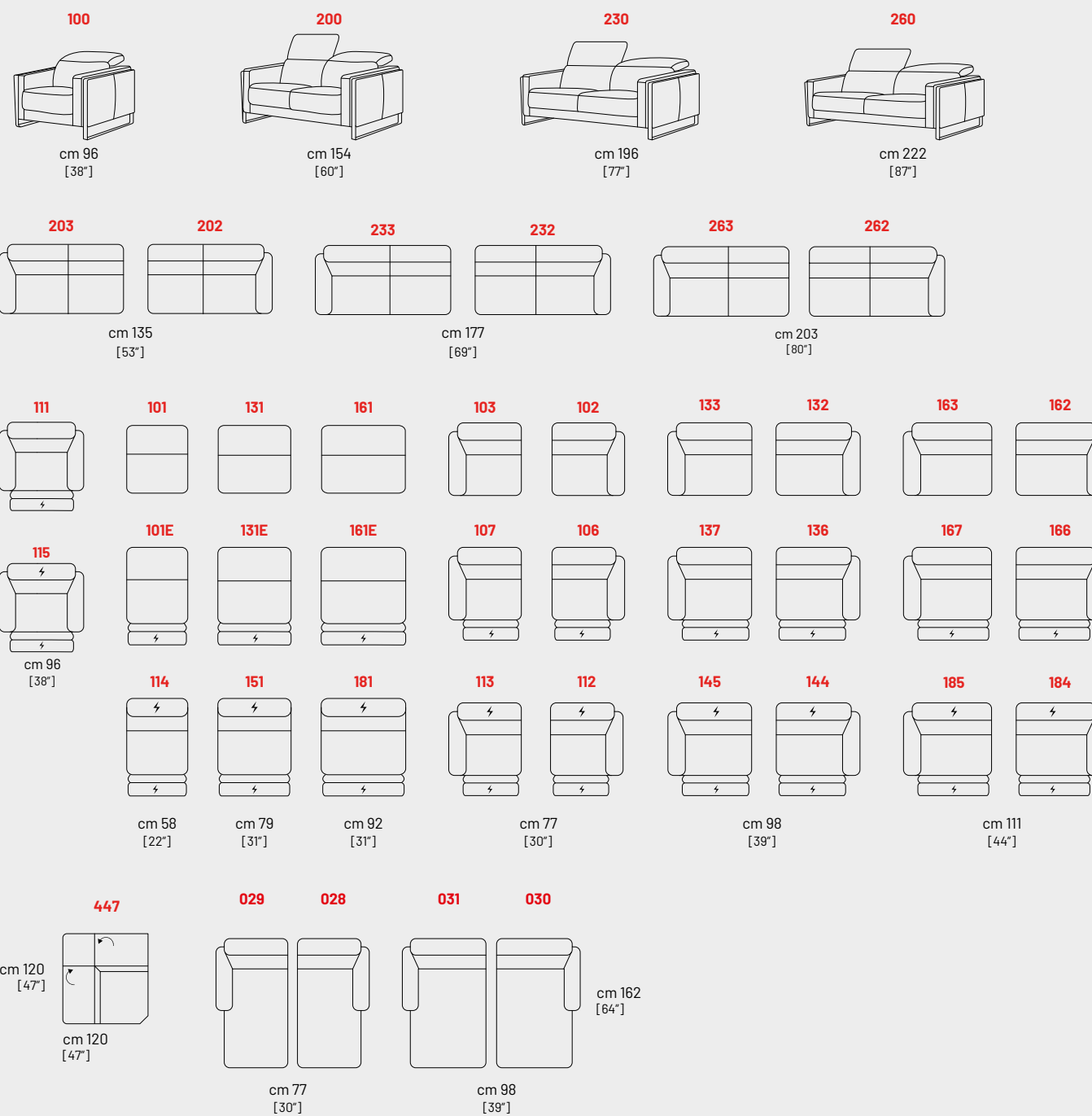
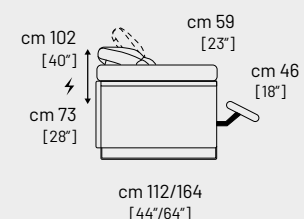
MERCEDES



Struttura: Abete, Multistrato e pannelli di particelle in legno classe E1. **Molleggio:** Molla greca per Seduta; Cinghia elastica per Spalliera. **Imbottitura Seduta:** Lastre in poliuretano espanso in densità 35 Kg. **Imbottitura Spalliera:** Lastre in poliuretano espanso in densità 18 Kg. **Piedi:** In Metallo, varie finiture h.13. **Particolari:** Le versioni sono dotate di poggiatesta sollevabile manualmente. Disponibile, a richiesta, nelle versioni con meccanismo elettrico di seduta e poggiatesta regolabile elettricamente (GO-UP); **Note:** Cuscini seduta, schienali e Braccioli sono fissi.

Frame: Pinewood, multilayer wood and chipboard wood class E1. **Suspension:** Seats with Nosag metal springs. Back with Polypropylene elastic. **Belts:** Seat Padding. Layers of non-deformable polyurethane foam 35 Kg density. **Back Padding:** Layers of non-deformable polyurethane foam 18 Kg density. **Feet:** Metal feet. **Peculiar:** All covers are equipped with a manual headrest. Recliner "Zero Wall" System with electrical function and, Headrest System (GO-UP) with electrical function, available on demand. **Note:** Seat cushions, Back cushions and Arms are fixed.

Carcasse: Hêtre + panneaux de particules cl. E1. **Suspension:** Nosag sur les assises. Sangle élastiques croisées haute résistance sur les dossiers. **Coussins d'assise:** Polyurethane expans densité 35 Kg. **Coussins de dos:** Polyurethane expans densité 18 Kg. **Pieds:** En metal h. 13 cm. **Divers:** Tête re glable manuellement sûr toutes les versions. Mécanisme "zero wall system" relax électrique et tetieres re glables electriquement en option, sur demande. **Note:** Coussins d'assise, dossiers et accoudoirs sont fixes.



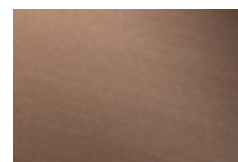
Piedi / Feet / Pieds



Colore piedi / Color Feet / Couleur Pieds



Satinato



Bronzato