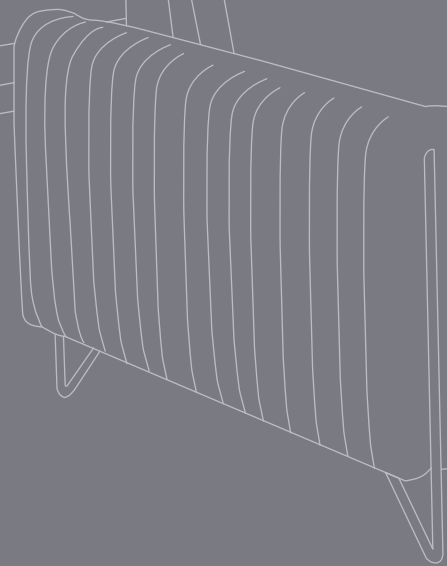
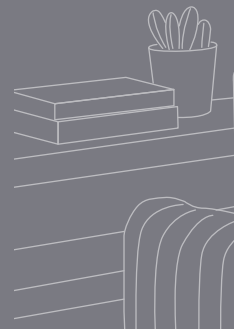
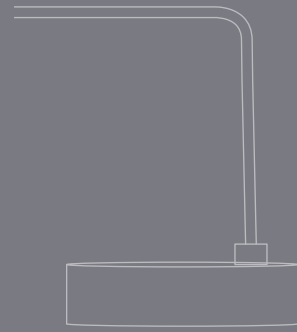


AISHA



GLAM-MORE



# AISHA

**Struttura:** Abete, Multistrato e pannelli di particelle in legno classe E1. **Molleggio:** Cinghie Elastiche in Polipropilene. **Imbottitura Seduta:** Lastre in poliuretano espanso in doppia densità 35 Kg. **Imbottitura Spalliera:** Fibra di Poliestere. **Piedi:** Piedi in metallo in varie finiture bronzato e Antique. **Particolarità:** Pronto letto con rete serie CLIO h.13 Loiudice e materasso in poliuretano 35 Kg. Altezza 12 cm. **Note:** Cuscini Seduta e Braccioli fissi; Schienali amovibili.

**Frame:** Pinewood, multilayerwood and chipboard wood class E1. **Suspension:** Polipropylene elastic Belts. **Seat Padding:** Layers of non-deformable polyurethane Foam 35 Kg double density. **Back Padding:** Polyester Fibre. **Feet:** Metal feet in various finishes bronze, Antique. **Peculiar:** Bed Version "rapido system" CLIO H.13 Series Loiudice and foam mattress 35 Kg. In height 12 cms. **Note:** Seat and Arms fixed; Back cushions removables.

**Carcasse:** Hêtre + panneaux de particules cl E1. **Suspension:** Sangle élastiques croisées à haute resistance. **Coussins d'assise:** Polyurethane expansé en double densité 35 Kg. **Coussins de dos:** Fibre de Dacron. **Pieds:** En métal différentes finitions Bronzé, Antique. **Divers:** Convertible "rapido system" méc. Serie CLIO H.13 Loiudice avec matelas polyurethane expansé densité 35 Kg. En h. 12 cms. **Note:** Coussins d'assise et accoudoirs sont fixes; Dossiers déhoussables.

